

Biddulph Valley Way

The trail is ideal for cycling and walking because it is traffic free. It follows the former Biddulph Valley railway line, signed as National Cycle Route 55, for 10 miles between Congleton and Milton and the Caldon Canal towpath, signed as National Route 550, for 3 miles between Milton and Stoke. Much of the former railway line is also suitable for horse riding.



Look out for the new “Wayfinding signs”, at the Stoke end of the route, to help you explore the local area. The route has gentle gradients with a high point near Biddulph. The route surface is generally good, except for a short stony section (see map). There is a ½ mile on road section at each end of the route.



Bridge over A527

Nearly all of the route is suitable for wheelchairs, pushchairs and buggies. except for the short stony section (see map) that also has steps and a wheeling ramp at one end. There are several anti-

Biddulph Valley Railway



Congleton Junction

The 13-mile Biddulph Valley railway line between Stoke and Congleton opened in 1860 and served several collieries, ironworks and a sand wharf. It opened for passenger traffic in 1864 with stations including Biddulph (you can still see the platform), Black Bull and Ford Green and several halts. The line closed for regular passenger service in 1927 and for freight in stages from 1968 to 1977 There are plans to reopen the 3-mile section from Milton to Stoke as part of a railway that will link Stoke to Leek, the Churnet Valley and Waterhouses. See [www.mc railways.co.uk](http://www.mc railways.co.uk)



Biddulph Station

*Photo credits - 1 Congleton Town Council; 2 Biddulph Town Council; 3 Tripadvisor; 4 gps-routes; 5 allevents.in; 6,7,9,10,12 Stoke on Trent City Council; 8 Ford Green Hall Facebook; Congleton Junction – Cheshire East Council; Biddulph Station – bdgs.org; Biddulph Valley Way signs – P Hall; Bridge over A527 – M Barr; Dane in Shaw pasture SSSI – P Hall; Ford Green Reedbed SSSI – fordgreennaturereserv; Trail users (front cover) – Copyright © 2018 Alec Scaresbrook*

**Printed and designed by VAST- 2018**

motor cycle barriers on route and at most access points, some of which also have steps. Take care when following the linking routes as they may use or cross main roads. There are cafes, toilets and car parks in all of the town centres and at all of the other attractions, except for No.4 Mow Cop Folly and No. 7 Chatterley Whitfield. The train service between Stoke and Congleton runs hourly on weekdays and Saturdays. For folding bike hire at Stoke Station – see [www.bromptonbikehire.com](http://www.bromptonbikehire.com)

Nature Reserves

Along the trail, there are 2 sites (below) of special scientific interest (SSSI) and 3 local nature reserves, Whitemoor (B), Whitfield Valley (C) and Holden Lane pools (D).



A - Dane in Shaw pasture SSSI has nationally important grassland



C - Ford Green Reedbed SSSI is important for migrating swallows and forms part of the Whitfield Valley nature reserve.

Further information

**Tourism**  
[www.biddulph.co.uk](http://www.biddulph.co.uk)  
[www.congleton-tc.gov.uk](http://www.congleton-tc.gov.uk)  
[www.enjoystaffordshire.com](http://www.enjoystaffordshire.com)  
[www.staffsmoorlands.gov.uk](http://www.staffsmoorlands.gov.uk)  
[www.visitcheshire.com](http://www.visitcheshire.com)  
[www.visitstoke.co.uk](http://www.visitstoke.co.uk)  
[www.visitpeakdistrict.com](http://www.visitpeakdistrict.com)

**Cycle maps**  
**Stoke-on-Trent and Newcastle-under-Lyme**  
[www.fourpointmapping.sustrans.org.uk/cyclemap/stoke.html](http://www.fourpointmapping.sustrans.org.uk/cyclemap/stoke.html)  
**Staffordshire Moorlands**  
[www.staffordshire.gov.uk/transport/cycling/Cycle-maps/cyclemaps.aspx](http://www.staffordshire.gov.uk/transport/cycling/Cycle-maps/cyclemaps.aspx)  
**South East Cheshire (SECCAG)**  
[www.travelcheshire.co.uk/cycle/cycle-maps](http://www.travelcheshire.co.uk/cycle/cycle-maps)  
**The National Cycle Network**  
[www.sustrans.org.uk/ncn/map](http://www.sustrans.org.uk/ncn/map)  
**Sustrans pocket maps**  
<https://shop.sustrans.org.uk/maps>

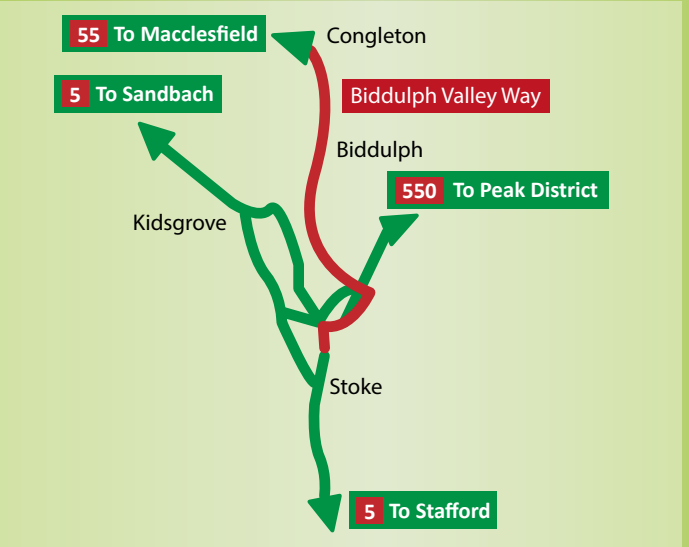
Acknowledgements

The Biddulph Valley way runs through several local council areas and their generous support and joint funding has enabled the production of this leaflet.



Sustrans and the National Cycle Network

The Biddulph Valley Way is part of the National Cycle Network (NCN) that Sustrans launched in 1995 and coordinates today. The National Cycle Network now has more than 14,000 miles of traffic-free paths, quiet lanes and on-road walking and cycling routes around the UK.



The diagram above shows the main National Cycle routes connecting to the Biddulph Valley Way.

Sustrans is the charity making it easier for people to walk and cycle. We connect people and places, create liveable neighbourhoods, transform the school run and deliver a happier, healthier commute. Join us on our journey. At [www.sustrans.org.uk](http://www.sustrans.org.uk) you can find out about Sustrans activities or “sponsor a mile” of the National Cycle Network or find out about volunteering.

Sustrans has over 400 local volunteer groups and this leaflet was produced by the South Cheshire and North Staffordshire group - [www.sustransinscans.btck.co.uk](http://www.sustransinscans.btck.co.uk) (E&OE)

Biddulph Valley Way  
Cycling and Walking Trail



Image Copyright © 2018 Alec Scaresbrook

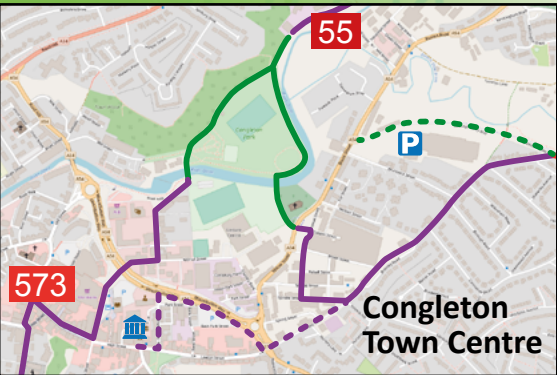


Image Copyright © 2018 Alec Scaresbrook

**This traffic free route links Stoke to Congleton and passes great scenery and attractions**



# Biddulph Valley Way



## Congleton Town Centre

Congleton is a bustling market town with a great mix of shops, cafes, restaurants and pubs. Close by is the award winning Congleton Park



**Mow Cop and Folly NT** At 355m Mow Cop is a long climb up from the valley, but the views are worth it. The "Folly" was built in 1754.

## Greenway Bank Country Park

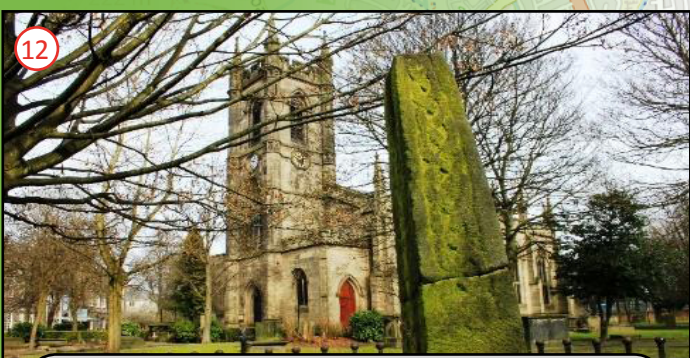
There are walking trails round the lake and reservoir, and a Castellated Tower, Ancient Well, Hermit's Stone and Visitor Centre.



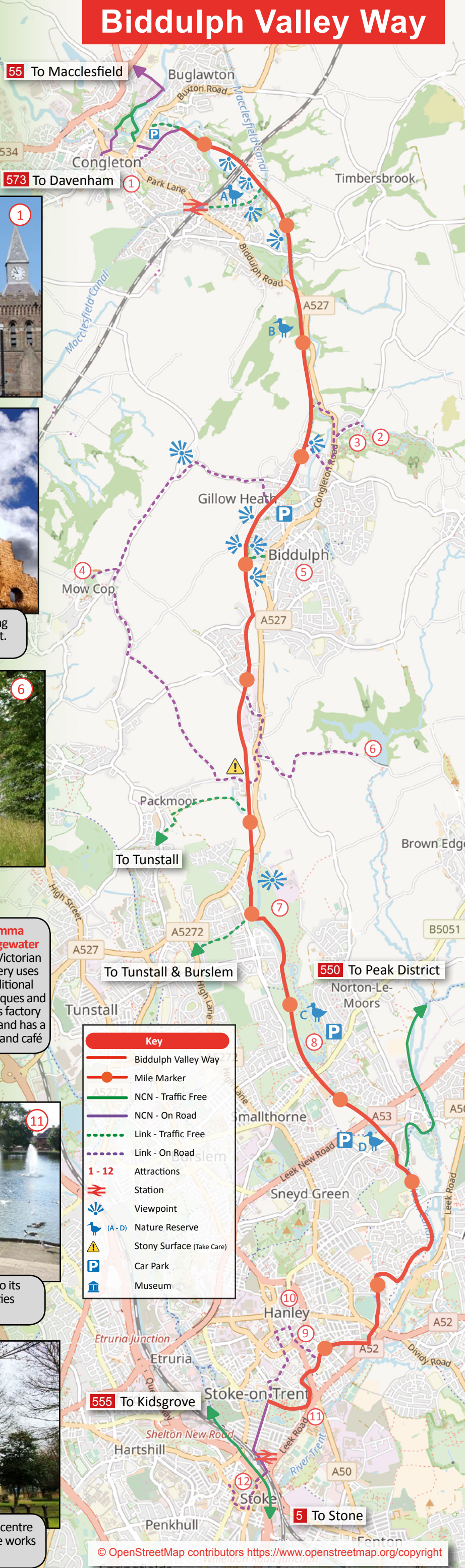
**Emma Bridgewater** This Victorian pottery uses traditional techniques and offers factory tours and has a shop and café



**Hanley Park** This superb park is being restored to its original formal splendour with improved facilities including a new café.



**Stoke Town Centre** This administrative and historic centre includes the impressive Stoke Minster and the Spode works visitor centre and museum.



Key	
<span style="color: red;">—</span>	Biddulph Valley Way
<span style="color: red;">●</span>	Mile Marker
<span style="color: green;">—</span>	NCN - Traffic Free
<span style="color: blue;">—</span>	NCN - On Road
<span style="color: green;">---</span>	Link - Traffic Free
<span style="color: blue;">---</span>	Link - On Road
<span style="color: red;">1 - 12</span>	Attractions
	Station
	Viewpoint
	(A - D) Nature Reserve
	Stony Surface (Take Care)
	Car Park
	Museum



**Biddulph Grange Country Park**  
An attractive area of woodland and meadows with a large lake, visitor centre and picnic area.



**Biddulph Grange Garden NT**  
"A masterpiece of Victorian garden design - a quirky, playful paradise". There is an entry charge.



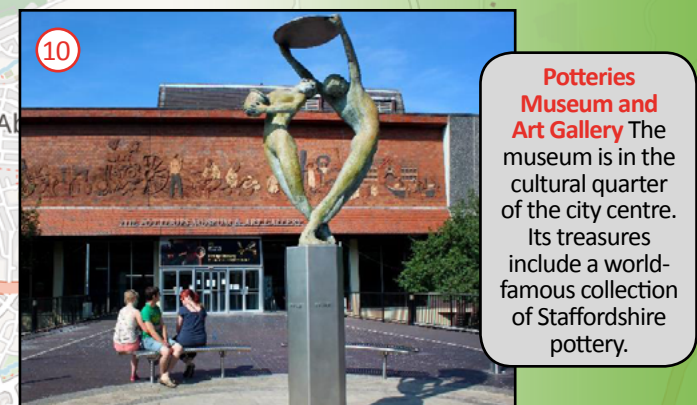
**Biddulph Town Centre**  
"The Garden Town of Staffordshire" is a pleasant place to stop with its shops, cafes, pubs, a monthly artisan market and floral displays.



**Chatterley Whitfield Colliery and Heritage Country Park**  
This was the first million-ton pit in Britain. It closed in 1977 and is now a Scheduled Ancient Monument.



**Ford Green Hall Museum**  
The hall was built in 1624 and is a fine example of a timber-framed farm house. There is an entry charge.



**Potteries Museum and Art Gallery** The museum is in the cultural quarter of the city centre. Its treasures include a world-famous collection of Staffordshire pottery.

